



the enriching hour

Preschool Newsletter

July 2023

Dates to Remember

- **July 1 — Tuition Due**
- **July 10 — New School Year Begins**
- **July 19 & 20— Teddy Bear Picnics (Children Only)**
- **August 7— Mobile Tide Pools**
- **September 4— Labor Day SCHOOL CLOSED**

NOTES FROM OUR TEACHERS

July brings us memories of summer fun in the Great Outdoors! On Wednesday, July 19 and Thursday, July 20 our classes will enjoy a “Teddy Bear Day.” This special day is for children and bears only! Please remind your child to bring a favorite Teddy Bear (or any stuffed animal) for a special day at school. We will use our bears throughout the



day for counting, sorting, classifying and teddy bear hugs!



Our curriculum will include: planning for picnics, learning about nourishing foods to take on picnics, safety rules, insects and other friends we might see on picnics, and how to keep our environment clean. If your child has any related books or games, please let us know. We would love to include ideas from home.

WELCOME! WELCOME!

We extend a warm welcome to all our new families and little ones joining us at The Enriching Hour Preschool. We thank you for allowing us the opportunity to share these very precious years with you. We try to keep communication open with parents through our monthly emailed newsletter, our daily "Happenings" posted outside each classroom, notes and notices on the sign in sheets and, of course, verbal contact after pick-up time. Please email (enrichinghour@gmail.com) or call (818) 706-9414 the office with questions. Your child's teacher will be happy to discuss questions or concerns with you after dismissal time. A note of caution: If you are involved in a carpool, it is important for the carpooling parent to make sure any notices or posted information be brought home to the other families. As the children get settled in their new classes, we look forward to another rewarding school year filled with the excitement and discovery of early childhood!

BIRTHDAY CELEBRATIONS

The children always enjoy sharing their special day with friends at school. If you are having a special party outside of school, you may send out invitations by mail or by email. Please see your child's teacher for the email sign-up list. We usually compile this

list in July each year. Your child's class will celebrate each child's uniqueness on this day. Please be sure and let your teacher know in advance which day you would like to celebrate. Some months are busier than others.



SCHOOL ATTIRE



Children should be dressed for an **active, messy** day at school. **Comfortable** clothing that can get soiled is essential for school attire. Slip on shoes, crocks, flip flops or sandals can be dangerous and are inappropriate for active play.

Tennis shoes / sneakers and socks are recommended and must be worn at all times while at school. Please make sure your child's name is clearly marked on all removable clothing and lunch boxes.



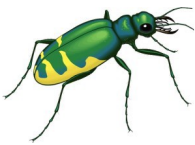
NOTICE TO ALL PARENTS

The Department of Social Services for the State of California sets certain standards for the safety and well being of all children. The current requirements from this agency refer directly to the Sign- In/Sign-Out sheets that are on the clipboards outside each classroom. The State is requiring that the adult signing a child in or out, do so by signing their Full Legal Name and enter the time of day the child is accepted into the school and the time of day the child is released from school. You will be called to return to school for your signature.

These sheets are legal documents and are the only required record of the children placed in our care for the day. It is **EXTREMELY** important that you sign your child in and out. In case of an emergency and evacuation, these clipboards are our means of knowing which children are attending school or if they have been picked up early.

The Department of Social Services collects a \$100.00 fine per unsigned child in a facility. In the event that we receive such fines due to a lack of signatures, we will have to collect the fine from the appropriate families.

INSECTS: FRIENDS AND FOES



During summer, we can count on warmer weather, budding trees, and insects. Most of the time, humans and insects get along fine. Insects can become an instant science lesson and keep young children occupied for long periods of time. However, children also tend to be bitten or stung by insects more often than adults. This is mainly because they spend more time outdoors.

In most cases, reactions to insect bites are mild. The area around the bite swells and itches or may be a little painful. Some children become preoccupied with the bite or may scratch the bite open. A cold compress or a little first-aid cream may reduce the itching and swelling as well as the child's tendency to be overly concerned. Usually, in a few hours or days, the bite disappears on its own.

On rare occasions, a child will develop a severe allergic reaction to a bite. Reactions can begin immediately after the child is stung.

Symptoms can include breathing difficulty, hives, and possibly shock.

Symptoms of shock are cool, clammy, pale skin; a weak, rapid pulse; thirst; and dizziness or faintness. If a child has this sort of reaction, seek medical attention immediately.

The bites and stings of certain insects are more serious than others. Honey-bees, wasps, and similar insects are the ones most often associated with severe allergic reactions.

Bites of some spiders like the black widow, brown recluse, and tarantula may be dangerous and, in some cases, life-threatening. Ticks are common and can be carriers for diseases such as Rocky Mountain spotted fever and Lyme disease.



TUITION REMINDER:

Tuition is due the first of each month.

Tuition rates for 2023-2024 school year effective July 1, 2023:

Preschool Rates

9:00 A.M. - 12:30 P.M.
M-F \$825.00
MWF \$600.00
TTH \$400.00

Extended Day Rates

9:00 A.M. - 3:00 P.M.
M-F \$1100.00
MWF \$825.00
TTH \$565.00

Full Day Rates

9:00 A.M. - 5:30 P.M.
M - F \$1250.00
MWF \$875.00
TTH \$600.00

Morning Care Flat Monthly Rates

7:00 A.M. - 9:00 A.M.
M-F Five Days per Week \$225.00
MWF Three Days per Week \$150.00
TTH Two Days per Week \$100.00

Registration \$125.00

Diapering/Potty Learning Fee -

Material Fee - \$50

Full & Extended Day - \$50 per month & Preschool - \$25 per month

Deposit - \$100.00

Congratulations to
Noa and The Grill
Family on their new
baby boy!

Congratulations to
Autumn and The
Gerson Family on their
new baby boy!



the
enriching
hour

Preschool Calendar 2023~2024

The following is a list of school closure dates. Please keep these dates for your reference during the school year. You will be reminded of these and other important dates in the monthly Newsletter under "Dates to Remember". We do attempt to implement the same holidays as those offered in the local public school district.

LABOR DAY

September 4, 2023

IN SERVICE

October 16, 2023

THANKSGIVING

November 23 & 24, 2023

WINTER BREAK

December 22-January 2, 2024

MARTIN LUTHER KING

January 15, 2024

PRESIDENTS' DAY

February 19, 2024

IN SERVICE

March 11, 2024

SPRING HOLIDAY

March 29 & April 1, 2024

MEMORIAL DAY

May 27, 2024

LAST DAY

June 28, 2024